

# Environmental Bulletin of Mytilene “Odysseas Elytis” Airport

## Reference year 2019

Fraport Greece

May 2020



## Version Control

Version	Revision	Description of Revision	Date
0	0		27/05/2020





Table of Contents

- Version Control ..... 3
- Table of Contents ..... 5
- 1. INTRODUCTION ..... 6
  - 1.1. Airport Basic Data ..... 6
  - 1.2. Airport Facilities ..... 7
    - 1.2.1. Fuel Handlers..... 7
    - 1.2.2. Ground Handlers..... 7
- 2. TRAFFIC DATA STATISTICS..... 7
  - 2.1. Annual Traffic Data ..... 7
  - 2.2. High season traffic data ..... 8
  - 2.3. Low season traffic data..... 8
- 3. AIRCRAFT NOISE ..... 9
  - 3.1. Noise measurements during the reference year ..... 9
  - 3.2. Noise levels calculation based on noise simulation software ..... 10
- 4. AIR QUALITY ..... 11
  - 4.1. Air quality measurements during the reference year ..... 11
  - 4.2. Air pollutants emission and dispersion modelling..... 12
- 5. WASTE MANAGEMENT ..... 14
- 6. ECOSYSTEM AROUND THE AIRPORT..... 15
  - 6.1. Flora-Fauna ..... 15
  - 6.2. Ecologically fragile areas..... 15
- 7. WILDLIFE HAZARD MANAGEMENT ..... 16
- 8. CULTURAL HERITAGE ..... 16
- 9. RESOURCES CONSUMPTION ..... 17
  - 9.1. Energy consumption..... 17
  - 9.2. Fuel consumption..... 17
  - 9.3. Heating oil or natural gas consumption ..... 17
  - 9.4. Water consumption..... 17
- 10. GREENHOUSE GAS EMISSIONS & CARBON FOOTPRINT ..... 18
- 11. HUMAN CONSUMPTION WATER MONITORING PROGRAM ..... 18
- 12. RAINWATER ..... 19
- 13. GROUNDWATER MONITORING PROGRAM ..... 19
- 14. SEWAGE TREATMENT & DISPOSAL..... 20

## 1. INTRODUCTION

### Location

The “Odysseas Elytis” airport of Mytilene is located at a distance of 6km from the capital of Mytilene island, near the east coast of the island. At the south-west the settlements Akrotiri, Taxiarches and Aghia Marina are located, at the north the settlements Neapoli and Vareia are located, whereas at the south the village Agrilia Kratigos is located.

### Administration

The airport administratively belongs to the Municipal Community of Mytilene and the Local Community of Aghia Marina of the Municipal Unit of Mytilene of the Municipality of Lesvos of the homonym Regional Unit that belongs to the Region of South Aegean

### Environmental licensing

Approved Environmental Terms	
E.T. Decision Reference number	JMD 81441/20.12.2002
E.T. Amendment Decision Reference number	Ref. No οικ. 23984/11.05.2016
	Ref. No οικ. 1004/16.01.2018

### 1.1. Airport Basic Data

Airport Basic Data					
Airport name IATA / ICAO	MJT / LGMT				
Airport position – Airport Reference Point (ARP)	Latitude: 39° 03' 28" N Longitude: 26° 35' 55" E				
Altitude:	18.41 m				
Number of runways	1				
Operation hours (summer)	06:00 – 23:00				
Operation hours (winter)	00:01 – 24:00				
Runways	Length / Width			Code	
Runway	2,406m x 45m			14/32	
Full length of parallel taxiway	N/A				
Number of taxiways	5				
Apron capacity	A	B	C	D	E
	-	-	4	1	-
Employees	High season (31.8.2019)			Low season (30.11.2019)	
Fraport Greece (FG) employees	24			24	
Employees of other companies	375			362	
Terminal					
➤ Total area (m <sup>2</sup> )					7,140
Other buildings and service/storage areas					
➤ RFF (m <sup>2</sup> )					1,198

Parking Areas	
Car parking spaces	-
Bus parking spaces	11
Taxi parking spaces	20

## 1.2. Airport Facilities

### 1.2.1. Fuel Handlers

Number of fuel handler companies				
Number of fuel handler companies operating at the Airport				2
Installations inside the airport		EKO	GISCO	HAFCO
Environmental Management System (EMS)	(YES/NO)	YES	YES	Not operating at the airport

### 1.2.2. Ground Handlers

Ground Handlers				
Number of ground handler companies operating at the airport				3
Installations inside the airport		SKYSERV	SWISSPORT	GOLDAIR
Vehicles (total number)		9	14	20
Environmental Management System (EMS)	(YES/NO)	YES	YES	YES

## 2. TRAFFIC DATA STATISTICS

### 2.1. Annual Traffic Data

Annual Traffic Data for the year 2019	
Overall Annual Air Traffic Movements <sup>1</sup>	6,571
Percent of increase or decrease in relation to the previous year	6.7%
Annual passenger traffic	496,577
Percent of increase or decrease in relation to the previous year	4.1%
Annual cargo transferred (tn)	349
Percent of increase or decrease in relation to the previous year	-9.18%
Aircraft types	
Prevailing aircraft types for domestic flights	
Aircraft type	No. of flights
AT45	1,562
DH8D	1,292
A320	1,190
AT72	523
AT75	512

<sup>1</sup> Military and training flights not included.

A32A	204
AT43	150
C172	40
A319	32
A321	29
Other	106
<b>Prevailing aircraft types for international flights</b>	
<b>Aircraft type</b>	<b>No. of flights</b>
B73H	349
A32B	108
B738	100
B73W	72
A321	59
A319	58
B737	39
A320	36
A318	24
7S8	16
Other	70

**2.2. High season traffic data**

<b>High season traffic data (June-September)</b>	
Highest traffic month	July
Air traffic movements during the month with highest traffic	731
Air traffic movements daily average number during the month with highest traffic	24

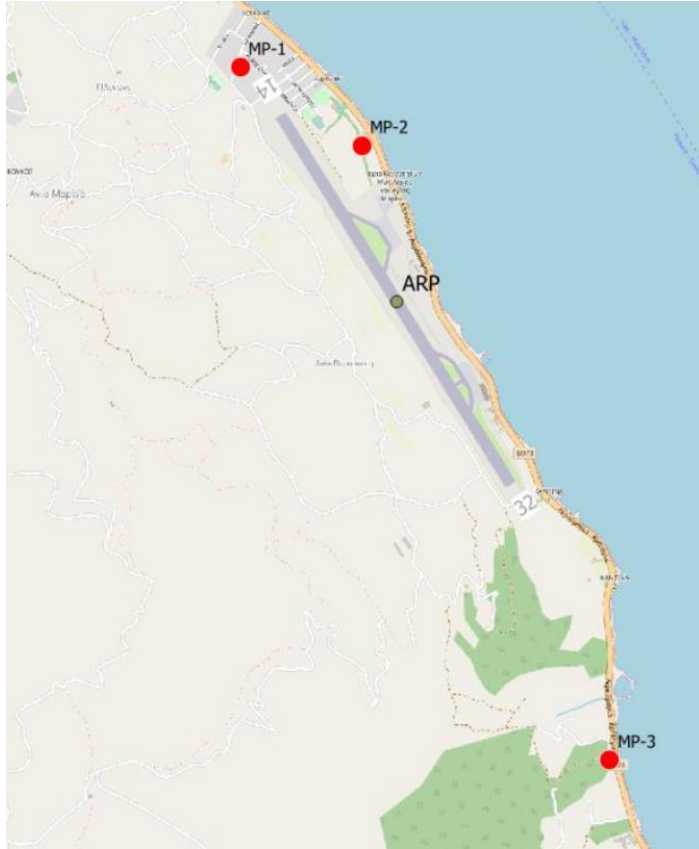
**2.3. Low season traffic data**

<b>Low season traffic data (October-May)</b>	
Lowest traffic month	February
Air traffic movements during the month with lowest traffic	417
Air traffic movements daily average number during the month with lowest traffic	15





### 3. AIRCRAFT NOISE

#### 3.1. Noise measurements during the reference year

Have noise measurements at the airport's surrounding area been performed during the reference year? [YES/NO]		YES
<b>Measurement points</b>		
		
<b>Measurement points coordinates</b>	<b>Measurement points description</b>	
1) Position: 39° 04' 10" N 26° 35' 19" E	Neapoli area, north of the runway in a hotel yard. Affected by arrivals RWY 14 and departures RWY 32.	
2) Position: 39° 03' 56" N 26° 35' 47" E	East of the runway on a hotel roof. Affected by all flights to and from both directions	
3) Position: 39° 02' 56" N 26° 36' 44" E	To the south of the runway, in the yard of a house. Affected by arrivals RWY 32 and departures RWY 14.	
<b>Measurement period</b>	09.07.2019 – 10.07.2019	
<b>Noise indicators</b>	Lden, Lnight	
<b>Summary of measurement results:</b>		
Noise levels are monitored according to the airport's monitoring program. No exceedance of noise indicators levels Lden = 70 dB(A) and Lnight = 60 dB(A) was observed.		

3.2. Noise levels calculation based on noise simulation software

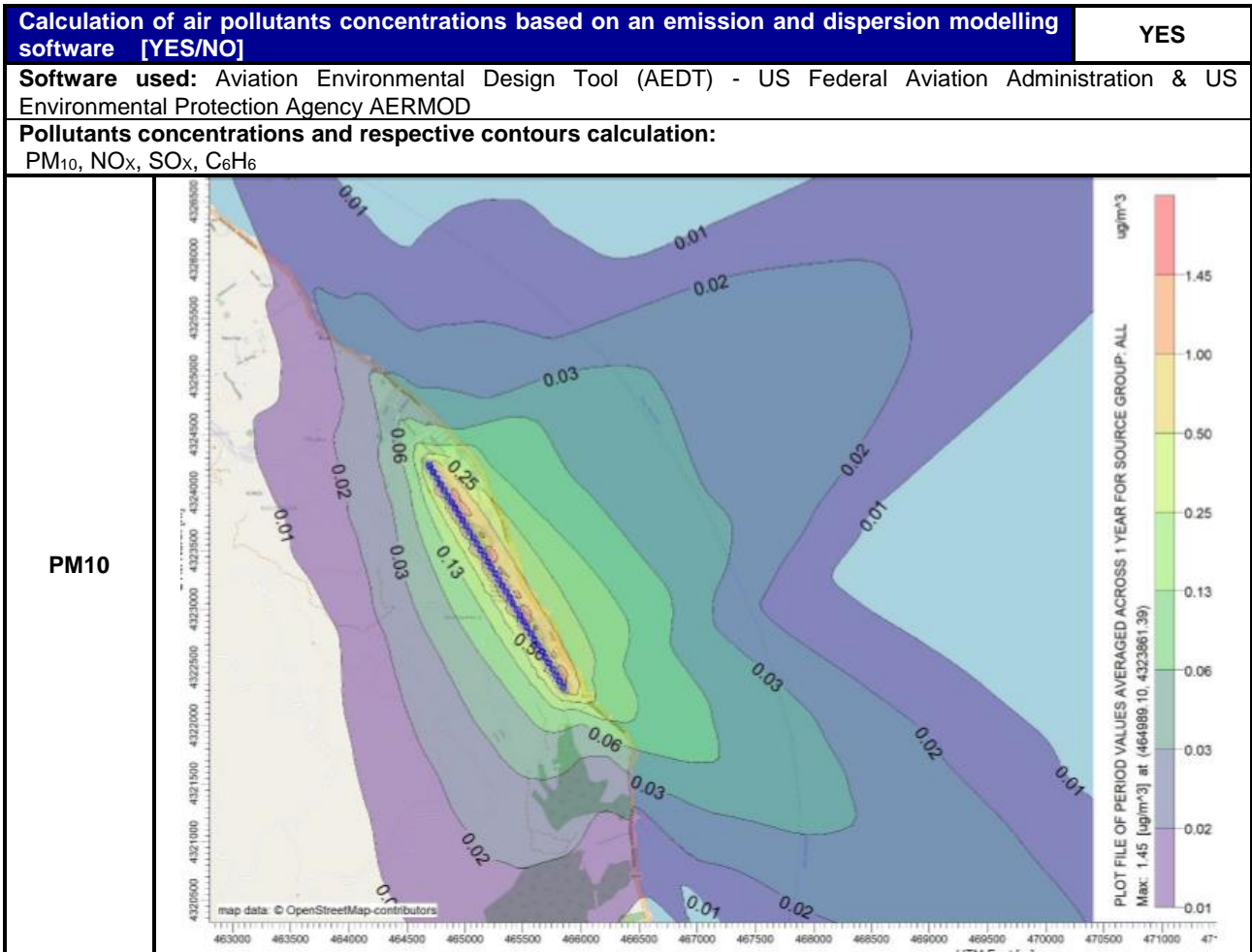
<b>Aircraft noise levels calculation based on simulation software [YES/NO]</b>		<b>YES</b>
<b>Software used:</b> IMMI Noise Prediction Software (CNOSSOS EU assessment method based on Directive 2015/996/EU)		
<b>Noise indicators and respective contours calculation:</b>		Lden, Lnight
 <p><b>LEGEND</b> AIRCRAFT NOISE ISO CONTOURS Noise Index Lden (Year 2019)</p> <ul style="list-style-type: none"> <li>55 dB(A)</li> <li>60 dB(A)</li> <li>65 dB(A)</li> <li>70 dB(A)</li> <li>75 dB(A)</li> </ul> <p><b>Lden</b></p>	 <p><b>LEGEND</b> AIRCRAFT NOISE ISO CONTOURS Noise Index Lnight (Year 2019)</p> <ul style="list-style-type: none"> <li>50 dB(A)</li> <li>55 dB(A)</li> <li>60 dB(A)</li> <li>65 dB(A)</li> <li>70 dB(A)</li> </ul> <p><b>Lnight</b></p>	
<b>Summary of results:</b>		
For the year 2019 no populations or buildings inside official settlement boundaries were found to be exposed to noise levels higher than the limits Lden = 70 dB(A) and Lnight = 60 dB(A).		

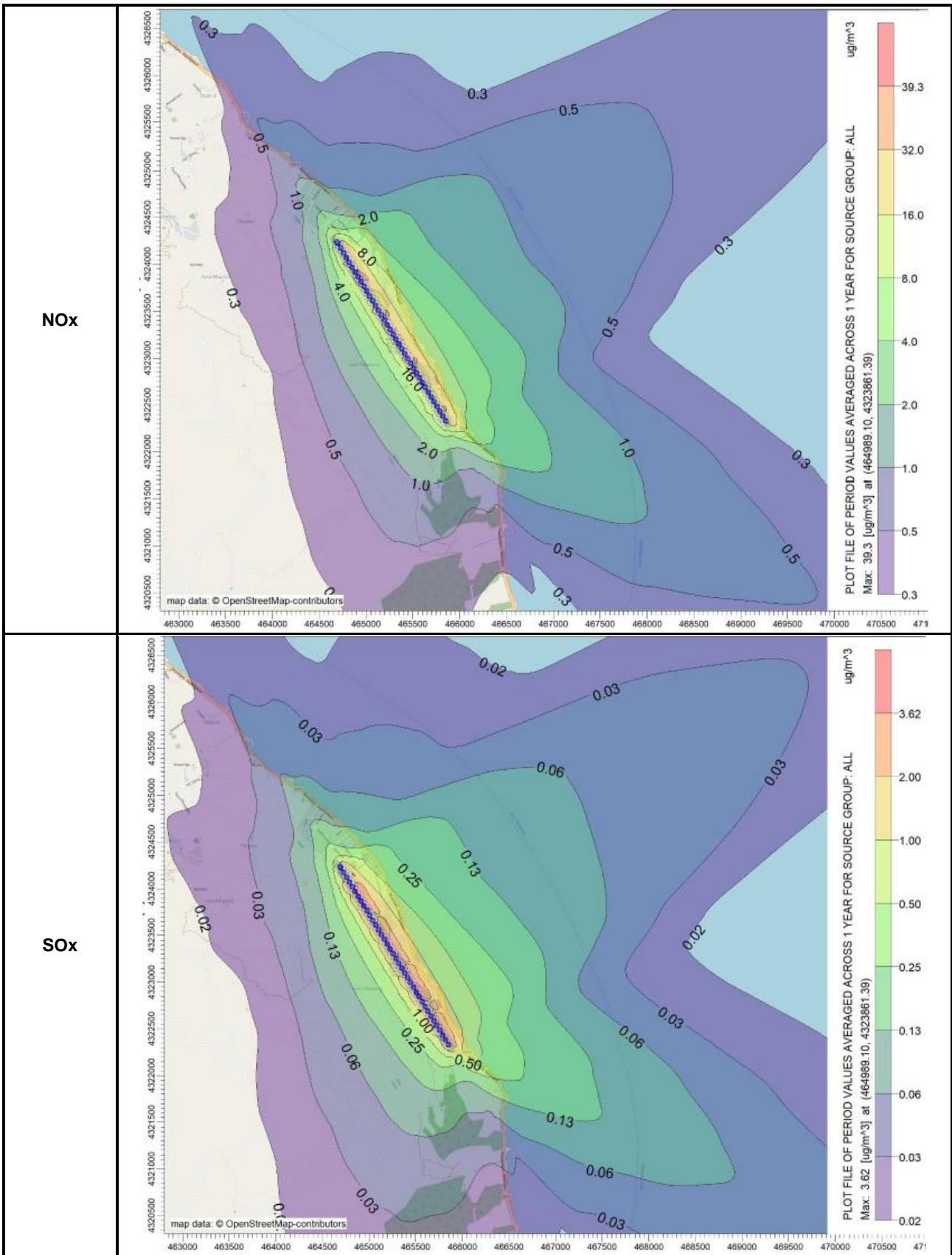
## 4. AIR QUALITY

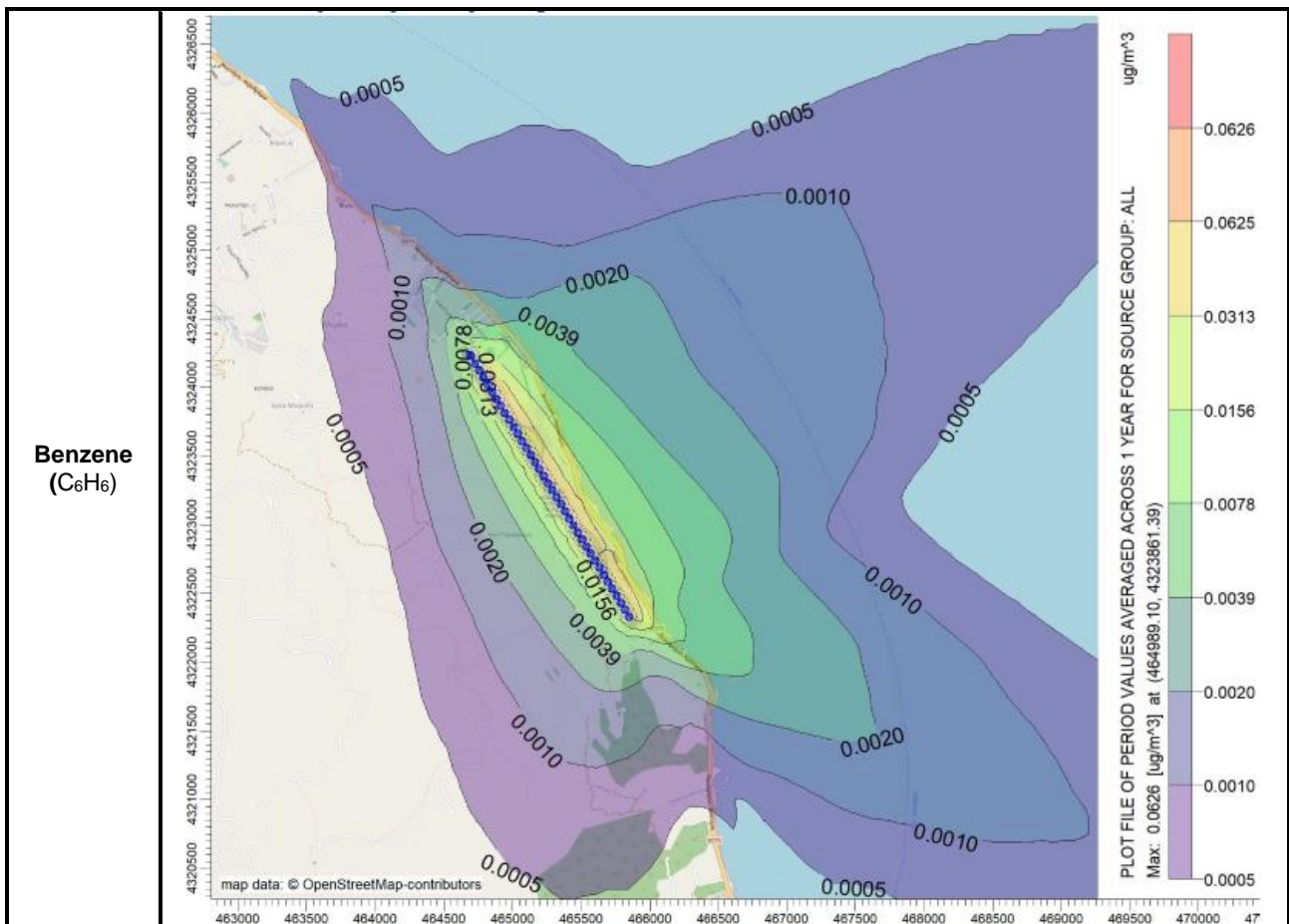
### 4.1. Air quality measurements during the reference year

<b>Have air quality measurements at the airport's surrounding area been performed during the reference year? [YES/NO]</b>		<b>NO*</b>
<b>Measurement points</b>		
N/A		
<b>Measurement points coordinates</b>	<b>Measurement points description</b>	
1) Position: --° --' --" N --° --' --" E	N/A	
2) Position:       --° --' --" N --° --' --" E	N/A	
<b>Measurement period</b>	N/A	
<b>Pollutants measured: N/A</b>		
<b>Summary of measurement results:</b>		
<p>*Fraport Greece, during the years 2018-2019, has implemented a noise &amp; air pollution monitoring program, according to the Approved Environmental Terms of the airport. The monitoring program included the implementation of special simulation tools in combination with confirmation measurements, of air pollution and noise, in representative positions around the airport.</p> <p>According to the abovementioned monitoring program, which is an annex of the approved Environmental Impact Assessment Study, and based on the results of the measurements for 2018, no air pollution measurements were programmed for the year 2019 at the airport. Instead, a computational approach with the use of air pollution simulation software was planned, the results of which are presented in paragraph 4.2. The results of the 2018 air pollution measurement are available at the respective environmental bulletin, which is published at the company's website.</p> <p>At the end of the two year period of the program, in May 2020, a Technical Evaluation Report was submitted to the Directorate for Climate Change and Air Pollution of the Ministry for Environment &amp; Energy, with proposals for the most suitable in terms of effectiveness, air pollution &amp; noise monitoring program for the years ahead.</p>		

4.2. Air pollutants emission and dispersion modelling







**Benzene  
(C<sub>6</sub>H<sub>6</sub>)**

**Summary of results:**

Air quality is monitored according to the airport’s monitoring program.  
No exceedance of the air quality limits was observed.

**5. WASTE MANAGEMENT**

Waste management		
Waste	Collection	Management/Disposal
Recyclables (paper, plastic, metals, glass)	Separate collection by the Municipality of Lesvos	Disposal at material recovery facility or transshipment for recycling
Residues (Mixed Waste) and Bulky Waste	Collection by the Municipality of Lesvos	Disposal in landfill

**Σημειώσεις:**

- Regarding the different categories of the MSW (recyclables, mixed waste), Airport Users handle their waste autonomously. The implementation of a central system by Fraport Greece is expected.
- Regarding the “alternative management’ waste categories (Waste lubricant oil WLO, WEEE, etc.):
  - Waste Lubricant Oil (WLO): Collection and management by authorized collector “CYTOP S.A.”
  - Waste Electrical & Electronic Equipment (WEEE): Collection and management by alternative management

Waste management		
Waste	Collection	Management/Disposal
system "Appliances Recycling S.A." iii. Accumulators: Collection and management by alternative management system "Re-Battery S.A." iv. Small batteries: Collection and management by alternative management system "AFIS S.A." v. Used tires: Collection and management by alternative management system "ECOELASTIKA S.A." 3. The total quantities of the produced waste by category resulting from all activities of the airport are recorded by Fraport Greece A and submitted in the Electronic Waste Registry via the Annual Waste Producer Report as provided for by the applicable legislation.		

## 6. ECOSYSTEM AROUND THE AIRPORT

### 6.1. Flora-Fauna

ECOSYSTEM AROUND THE AIRPORT	
<b>Flora</b>	
Are there protected zones of vegetation/habitats in the broader airport area? [YES/NO]	NO
(If YES) Short description:	
<b>Fauna</b>	
Are there protected zones of fauna/birds in the broader airport area? [YES/NO]	NO
(If YES) Short description:	

### 6.2. Ecologically fragile areas

The Mytilene Airport is located outside the limits of the protected areas included in the National Protected Areas Network and is at long distance from them.

The nearest areas of the NATURA 2000 network is the SCI & SAC "Lesvos: Kolpos Geras, Elos Dipi and Mount Olympos" (GR4110005) and the SPA "Lesvos: Kolpos Geras, Eli Dipi and Charamida" (GR4110013), at a distance of approximately 5km from the airport.

The nearest Wildlife Sanctuary (WS) is "Divolo-Akothi (Loutron)" with code K293, also at a distance of approximately 5km from the airport.

## 7. WILDLIFE HAZARD MANAGEMENT

Wildlife hazard management	
<b>Extent of the problem</b> (animal species):	<b>Strikes (%)</b>
<i>Larus michahellis</i> (Yellow-legged gull)	33%
<i>Hirundo rustica</i> (Barn swallow)	33%
<i>Galerida cristata</i> (Crested lark)	17%
Fox	17%
<b>Adopted measures :</b>	
<ul style="list-style-type: none"> <li>• Drainage ditches are periodically checked and if necessary cleaned, to ensure efficient water run-off and, thus, reducing the attractiveness of the airside to the wildlife</li> <li>• Systematic grass cutting at the airside</li> <li>• Fence maintenance</li> <li>• Trapping of mammals (mainly stray cats and dogs) that may be found at the manoeuvring area by the use of trap and under the permit received by the ministry of Environment &amp; Energy “Monitoring and trapping birds and mammals population at the 14 regional airports operated by Fraport Greece” (Permit: 165654/142, 12/2/2018)</li> <li>• Systematic monitoring and census of bird species populations on and off-airport (in a distance of 13km from the airport) and mapping of their habitat and the areas that are attractive to birds</li> <li>• Seminar awareness video on the identification and safe removal of reptiles and information about the snake species at Lesbos, under the collaboration with the Lalitsa Non-Profit Association</li> <li>• Awareness video on the safe handling of stray dogs</li> </ul>	
<b>Reference year summary results:</b>	
Hellenic Civil Aviation Authority receives annual reports referring to the risk assessment of the wildlife hazard as well as to the wildlife hazard management at the 12 regional airports operating by Fraport Greece. Aktion Airport and Chania Airport “Ioannis Daskalogiannis” are excluded, in accordance with the Concession Agreement, Annex 20, paragraph 6.3.3 & 6.3.4.	

## 8. CULTURAL HERITAGE

Have new cultural heritage properties been discovered during the reporting period? [YES/NO]			NO
<i>(if YES)</i> Details provided in the table below:			
Location	Date of discovery	Type of discovery	Additional protection measures taken



## 9. RESOURCES CONSUMPTION

### 9.1. Energy consumption

Energy consumption (monthly electric energy consumption, in Kwh)	
MONTH	Kwh
Total annual electric energy consumption (in Kwh)	1,385,425

### 9.2. Fuel consumption

Fuel consumption		
Number of FG vehicles at the airport	11	
Number of firefighting vehicles at the airport	3	
Total annual fuel consumption	Diesel (lt)	10,689
	Unleaded gasoline (lt)	228

### 9.3. Heating oil or natural gas consumption

Heating oil or natural gas consumption	
Total annual heating oil consumption (lt)	-*
Total annual heating natural gas consumption (m <sup>3</sup> )	N/A

\*Heating and cooling is achieved via heat pumps

### 9.4. Water consumption

Water consumption	
Period	Consumption [m <sup>3</sup> ]
Total annual consumption	10,383

## 10. GREENHOUSE GAS EMISSIONS & CARBON FOOTPRINT

Greenhouse gas emissions that were included in the carbon footprint calculation are the CO<sub>2</sub> emissions included in scope 1 & 2 of the GHG protocol:

- Scope 1: Direct GHG emissions that occur from sources that are owned and/or controlled by the airport.
- Scope 2: Indirect GHG emissions from the generation of purchased electricity, steam, heat or cooling consumed by the airport.

SOURCE FLOWS	TOTAL CO <sub>2</sub> EMISSIONS (t)
	2019
Direct emissions from heating fuel (scope 1)	0.0
Direct emissions from fuel used for fleet vehicles (scope 1)	16.7
Direct emissions from fuel used for firefighting vehicles (scope 1)	12.3
Direct emissions from fuel used for generators (scope 1)	9.8
Indirect emissions from electricity consumption (scope 2)	883.9
<b>Total (t)</b>	<b>922.8</b>
<b>Kilos CO<sub>2</sub>/ passenger</b>	<b>1.86</b>

### Notes:

Fraport Greece B committed to the monitoring, management and reduction of its airports carbon footprint. In order for this target to be achieved:

- Direct and indirect carbon emissions from all the emission sources in the airports' boundaries are calculated and reported, based on the GHG Protocol (scope 1 & 2)
- The airport was certified during the reference year according to ACA (Airport Carbon Accreditation).

## 11. HUMAN CONSUMPTION WATER MONITORING PROGRAM

Human consumption water quality	
Water supply (public water network or airport's boreholes)	Municipal Water & Sewage Company (DEYA) of Lesvos
Is sampling of the airport's water network performed? <b>[YES/NO]</b>	YES
<b>(if YES)</b> Sampling frequency:	Quarterly
<b>Summary of results:</b> The results of the microbiological and chemical analyses show that the parameters analysed as regards the airport's water network are <b>within the legislative limits</b> defined by the Ministerial Decision Γ1 (δ)/ΓΠ οικ. 67322/ GG 3282 B/19-9-2017 regarding the quality of human consumption water.	

## 12. RAINWATER

RAINWATER (collection, treatment disposal and recipient)		[YES/NO]
Area	Collection/treatment/disposal	
Apron and manoeuvring area	Collected in drainage ditches leading to the sea	YES
Other runoffs (runway etc.)	Collected in drainage ditches leading to the sea	YES
Treatment of rainwater by oil-separator		NO*
Rainwater quality		
Is sampling of the airport's rainwater performed? [YES/NO]		YES
(if YES) Sampling frequency::		Yearly
<b>Parameters analyzed:</b> pH, conductivity,TSS, DO, NO <sub>3</sub> , NO <sub>2</sub> , Oil & grease, BOD, COD, Total Petroleum Hydrocarbons (TPH), PAHs, BTEX, Heavy metals,PCBs, Detergents		
<b>Summary of results:</b> Surface rainwater quality is monitored according to the airport's monitoring program. Due to the absence of designated recipients and relevant national quality limits for surface rainwater, the Environmental Health & Safety Guidelines of the International Finance Corporation (IFC) are adopted. According to FG's analyses results and based on the abovementioned specifications, the airport's rainwater environmental condition is adequate and no further treatment measure is necessary.		

## 13. GROUNDWATER MONITORING PROGRAM

Groundwater quality	
Is sampling of the airport's groundwater performed? [YES/NO]	YES
(if YES) Sampling frequency::	Yearly
<b>Parameters analyzed:</b> pH, conductivity,TSS, DO, NO <sub>3</sub> , NO <sub>2</sub> , Oil & grease, BOD, COD, Total Petroleum Hydrocarbons (TPH), PAHs, BTEX, Heavy metals,PCBs, Detergents	
<b>Summary of results:</b> Groundwater quality is monitored according to the airport's monitoring program. In addition, the fuel handling companies monitor the quality of groundwater according to the environmental terms. According to FG's analyses results,, the environmental monitoring reports of the fuel handlers, and based on the New Dutch List (2009) which is adopted in the absence of relevant national specifications/limits, the environmental condition of the ground water is found adequate and no decontamination measures are necessary. The remediation process at EKO & GISSCO installation has been successfully completed during the reference year.	

## 14. SEWAGE TREATMENT & DISPOSAL

Sewage	
Sewage network to the municipal waste water treatment plant (WWTP)	NO
Autonomous airport's waste water treatment plant (WWTP)	YES
<b>Short description:</b> The airport waste water is collected through an integrated sewage network and taken to the WWTP inside the airport.	
<b>Blue water</b>	
<b>Collection and disposal:</b> Collection in a tank in the WWTP area and disposal inside the airport WWTP for further process.	

Waste water treatment plant description (where applicable)	
<i>Description of characteristics and condition of the airport's WWTP including possible problems. Type and frequency of the effluent quality measurements</i>	
<b>Degree of treatment of airport's WWTP</b>	Secondary treatment and chlorination
<b>Treatment method</b>	Prolonged ventilation
<b>Disposal of treated wastewater</b>	Limited irrigation during March-October Enrichment of the aquifer during the period from November to February.
<b>Sludge disposal</b>	Landfill
<b>Sampling frequency of WWTP effluent</b>	Monthly
<b>Parameters analysed</b>	BOD, COD, SS, TN, TP, T. Coliforms, E.Coli, pH, residual Cl <sub>2</sub>
<b>Summary of quality of WWTP effluent</b>	The WWTP effluent observes the limits set out in JMD 145116/2001 and particularly Table 1.